

1. GENERAL INFORMATION

1.	GENERAL INFORMATION	3
1.1.	GENERAL DESCRIPTION	3
1.2.	BASIC DELIVERY SCOPE OF SC1300 ON WHEEL CHASSIS WITH 10.5 M PLATFORM	8
1.3.	WARRANTY TERMS	11

Sales, Service and After sales

Plettac Ltd
Tel.: +380 (44) 364 9304, 364 9305

info@plettac.ua
www.plettac.ua

1. GENERAL INFORMATION

1.1. GENERAL DESCRIPTION

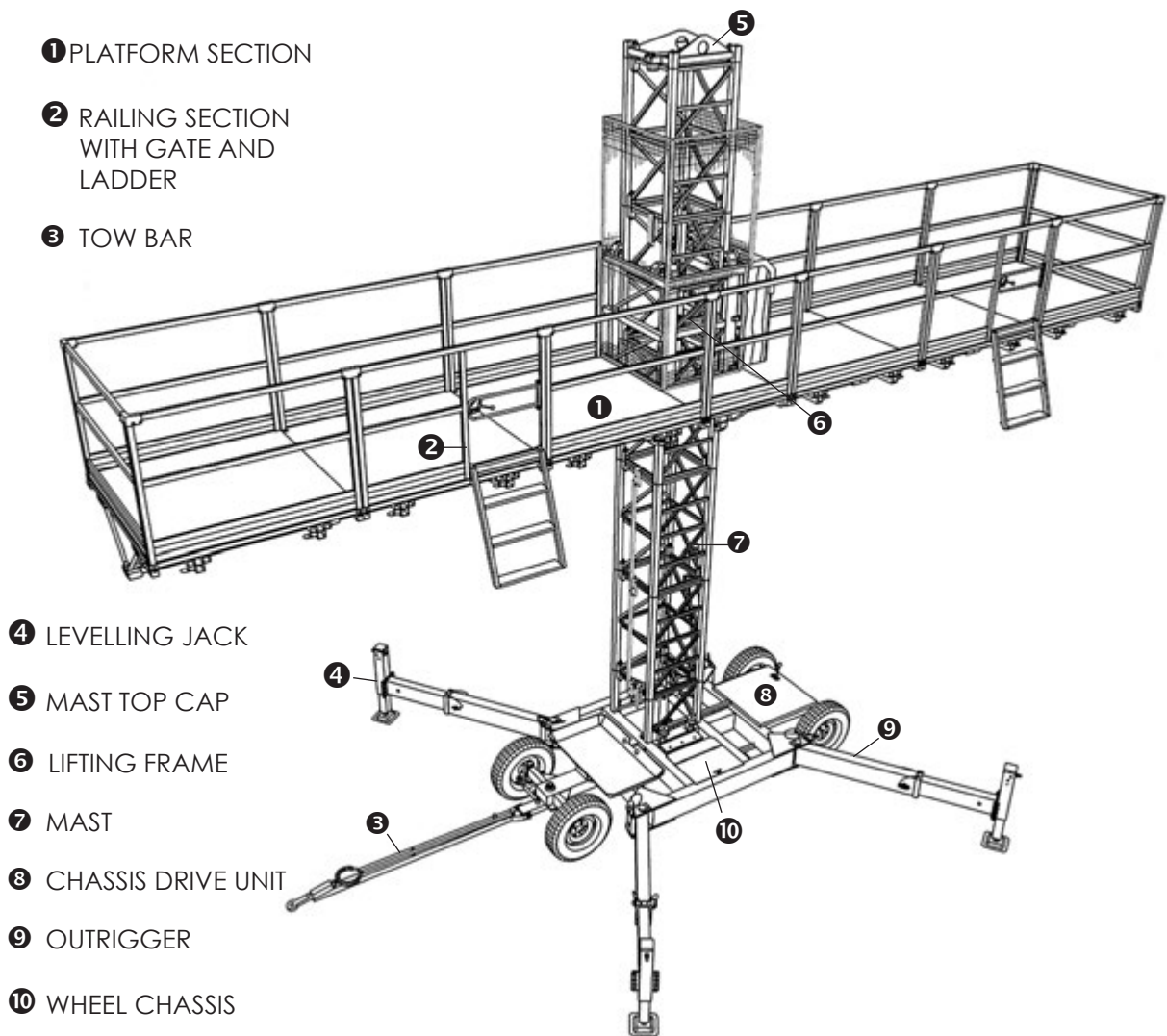
SCANCLIMBER SC1300 can be used either as a single or twin mast climbing work platform. It is designed to position men with their tools and other necessary equipment and material for working in high heights.

SCANCLIMBER SC1300 can be used for all kind of work: assembly, finishing, cladding and painting of buildings, facade

work and industrial objects. It can be installed indoors as well as outdoors.

The platform is operated up and down with push-buttons on pendant control box. On the station there is also an emergency stop push-button.

SCANCLIMBER SC1300 consists of chassis, mast and platform sections which are connected to the lifting frame.



13-0994-1-1C

Drawing 1.1. SC1300 on wheel chassis.

Wheel chassis consists of a welded frame with four wheels and four telescopic outriggers which can be turned out with levelling jacks. They are used for setting the mast in vertical position. Chassis drive unit is available for the wheel chassis to make the travel at worksite easier.

Towing of the **SCANCLIMBER SC1300** at worksite is possible with a tow bar.

!! IT IS NOT ALLOWED TO TOW SC1300 ON PUBLIC STREETS !!

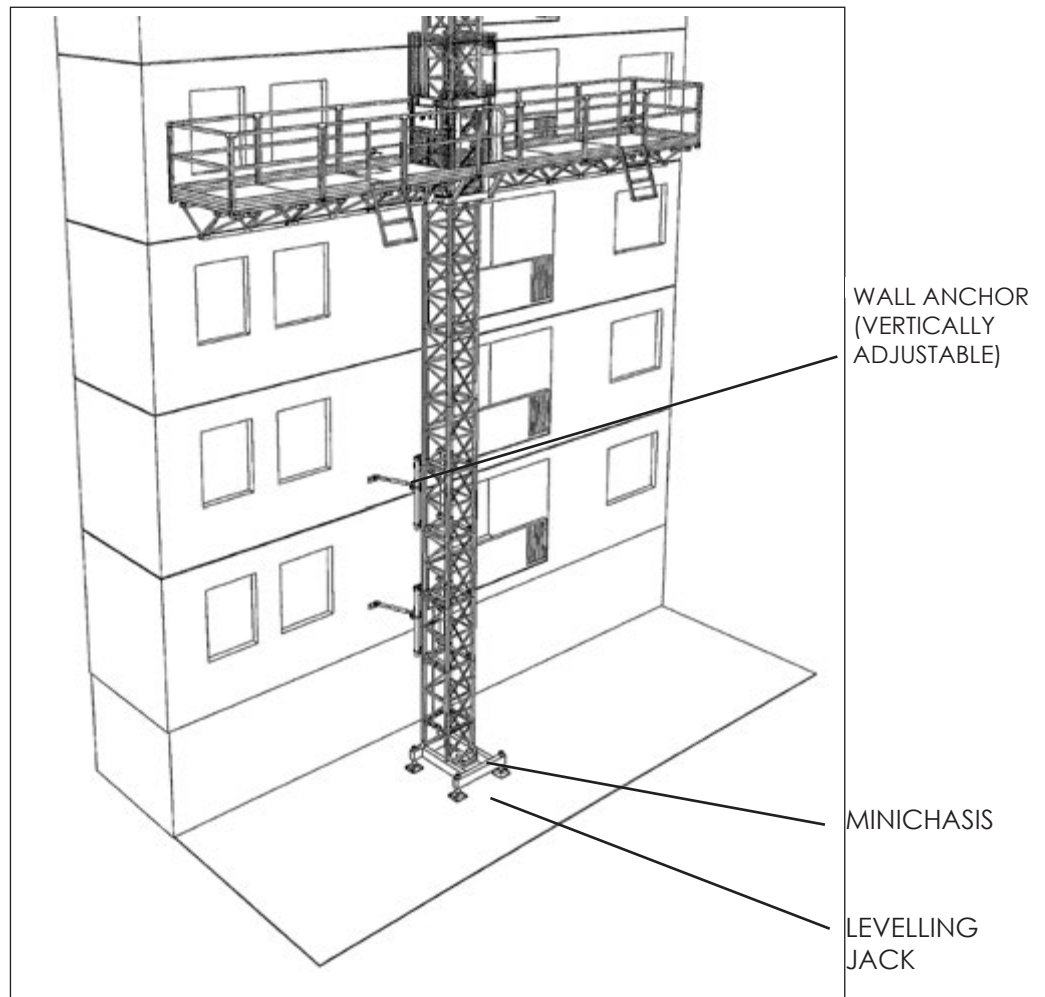
Mast consists of lattice structure mast sections which are assembled one on top of the other and connected with the mast bolt sets. On one side of the mast section there is the rack for platform drive

Top cap is bolted on the top of the mast. It works as a mechanical stopping device.

Top cap is also used as a hoist point when lifting mast sections or whole **SCANCLIMBER SC1300**.

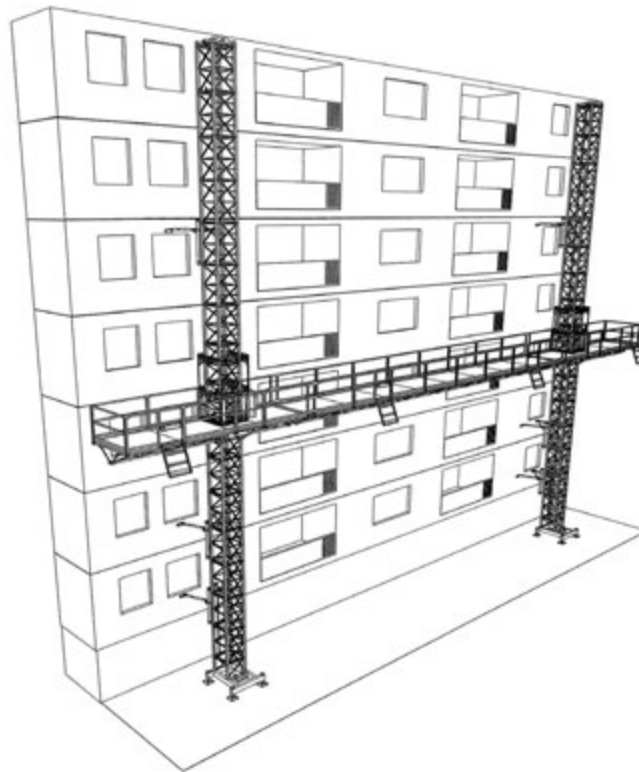
The maximum lifting capacity of the top cap is 5500 kg.

The freestanding height of mast, assembled onto the wheel chassis, is limited. By using the anchoring system it is possible to reach the maximum height of 100 m. The minichassis has been designed for the narrow and close worksites.



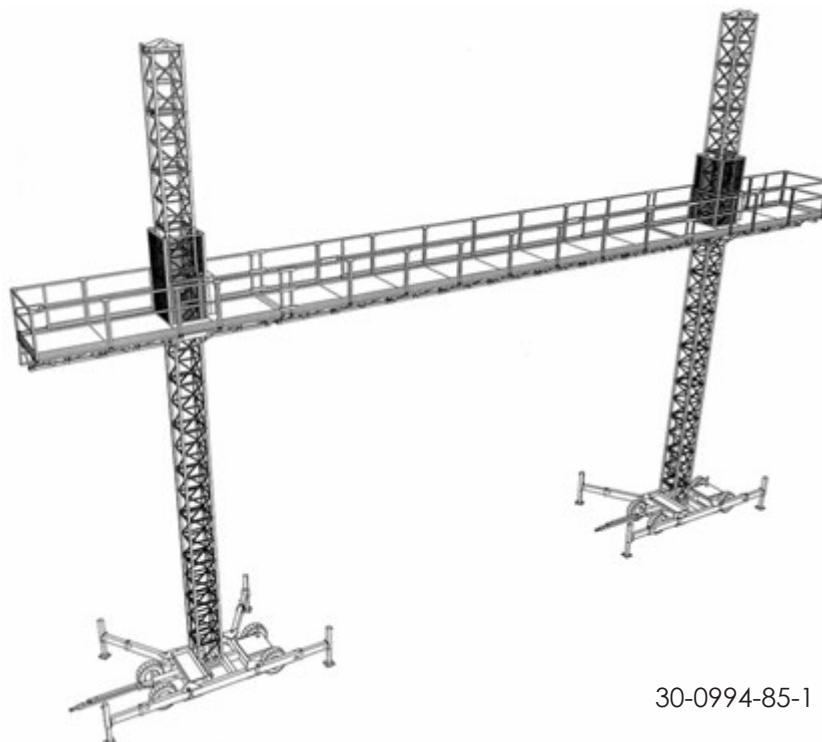
*Drawing 1.2.
SC1300 single on minichassis.*

By connecting two **SC1300 SINGLES** together with platform hinged joints you will get a SC1300 **TWIN** with wider working area.



30-0195-105-1

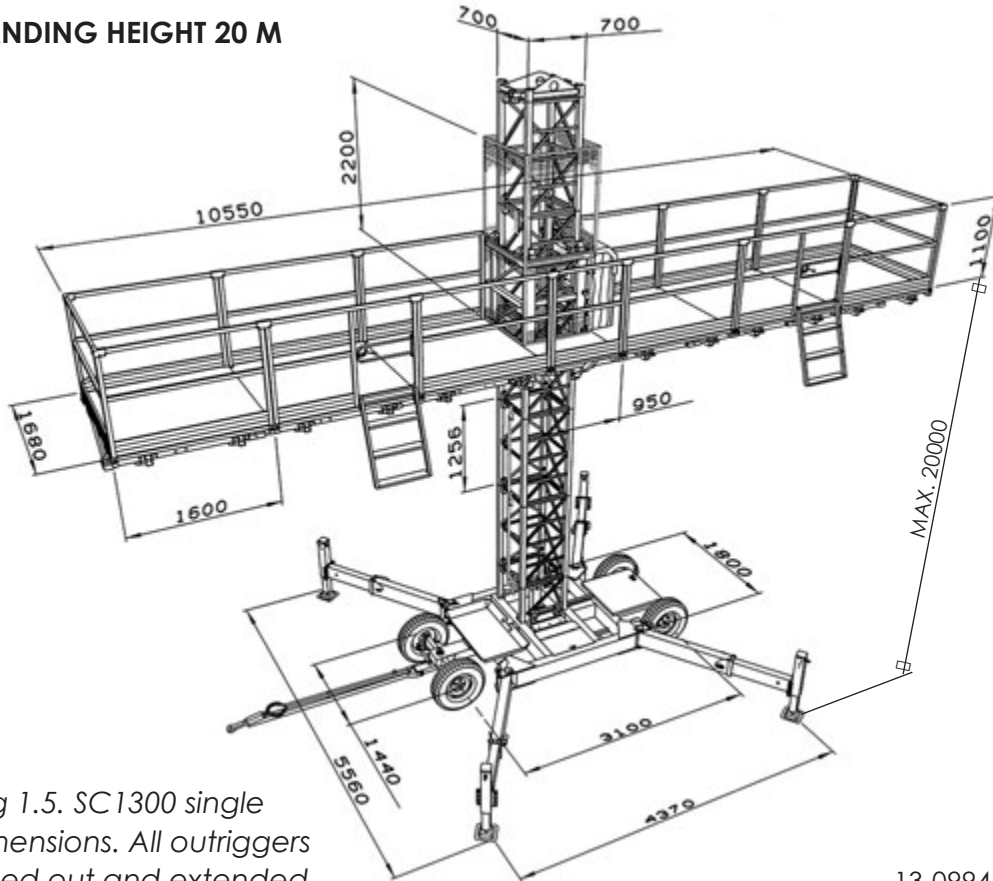
Drawing 1.3. SC1300 twin on minichassis.



30-0994-85-1

Drawing 1.4. SC1300 twin on wheel chassis.

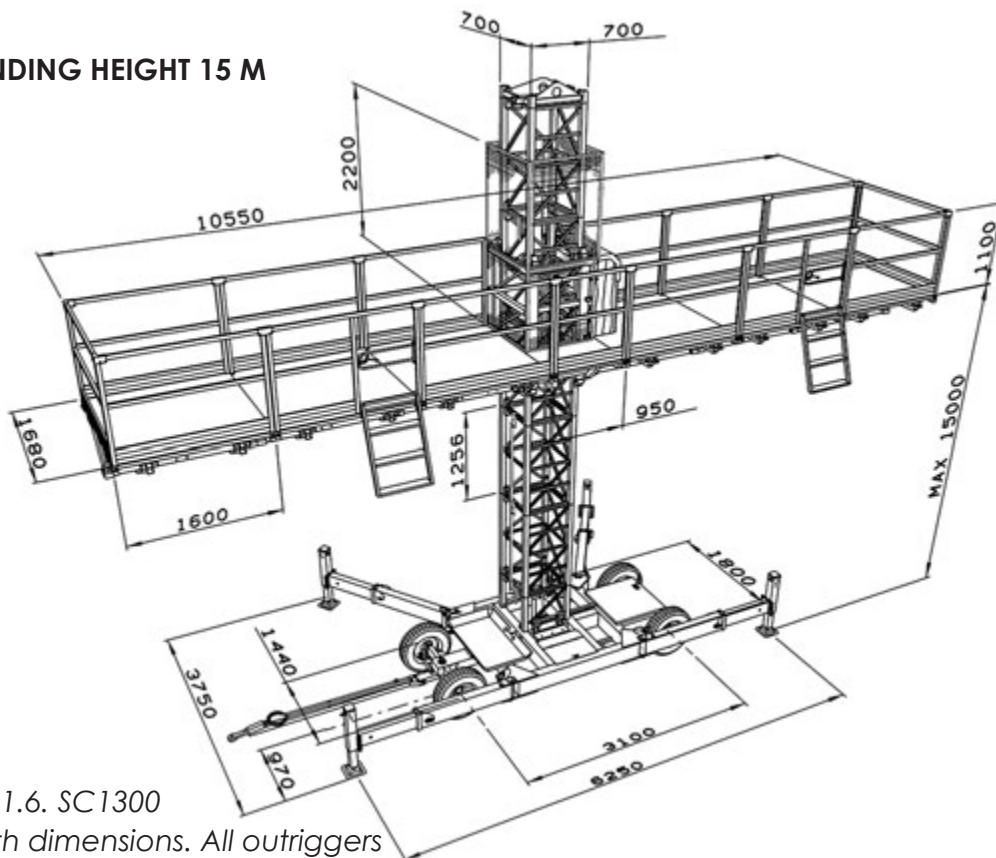
FREESTANDING HEIGHT 20 M



Drawing 1.5. SC1300 single with dimensions. All outriggers are turned out and extended.

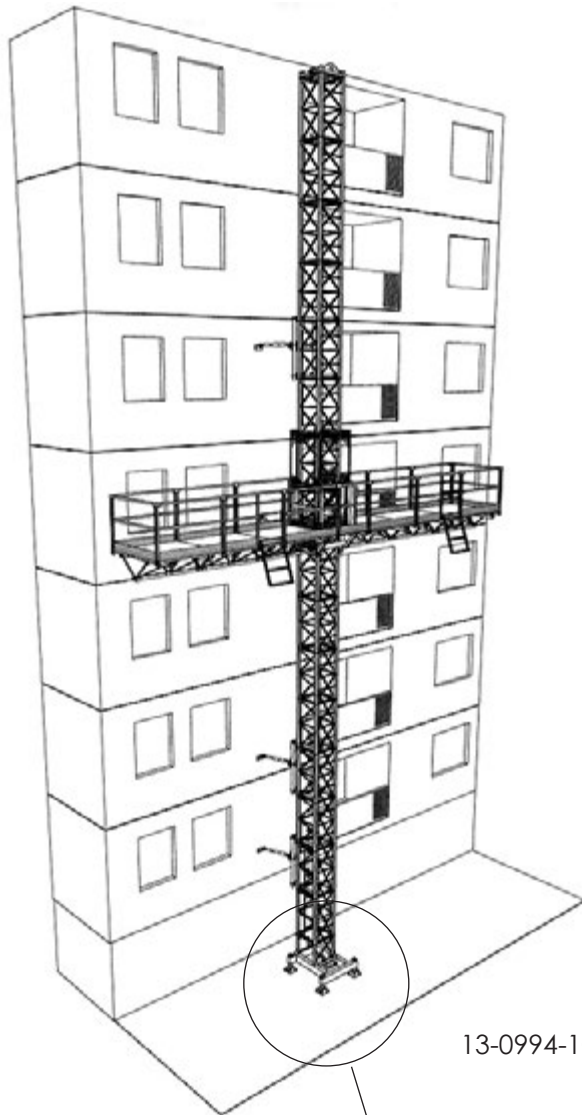
13-0994-2-2C

FREESTANDING HEIGHT 15 M

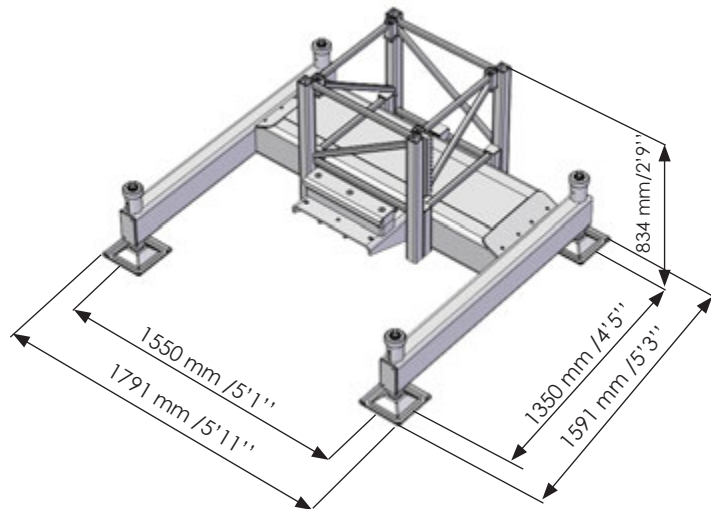


Drawing 1.6. SC1300 single with dimensions. All outriggers are extended, but turned out on mast side only.

13-0994-2-1C



13-0994-102-1C

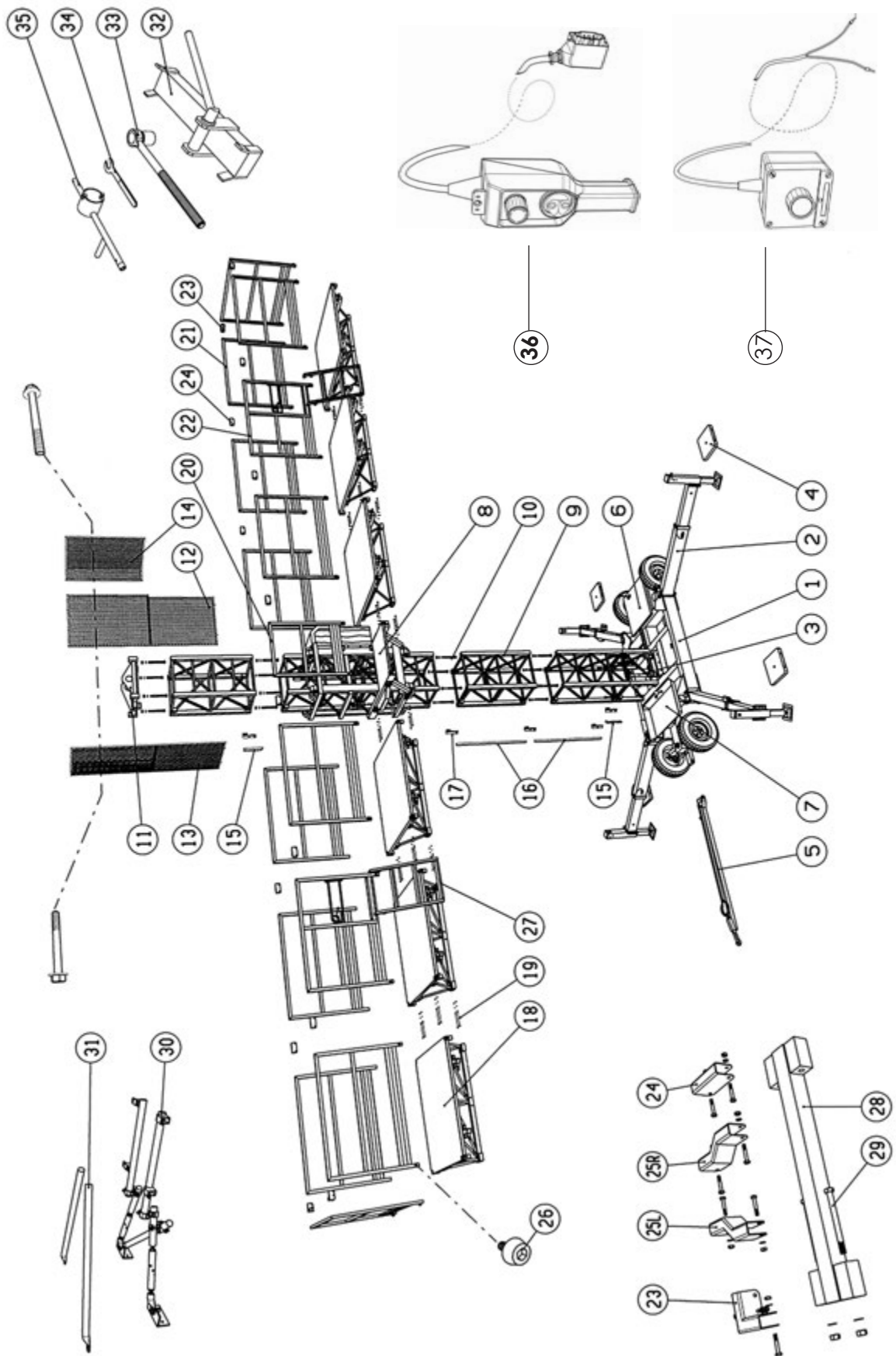


Drawing 1.7. SC1300 single on minichassis. Minichassis with dimensions.

1.2. BASIC DELIVERY SCOPE OF SC1300 ON WHEEL CHASSIS WITH 10.5 M PLATFORM (SEE PICTURE NO. 13-0994-1)

item description	pcs
1. Wheel chassis	1
2. Telescopic outrigger with levelling jack	4
3. Centre jack (when mast height over 30 m)	1
4. Ground plate	4+1
5. Tow bar	1
6. Chassis drive unit	1
7. Cable tray	1
8. Lifting frame	1
9. Mast section	x)
10. Mast screw set	4 pcs / mast section
11. Mast top cap (with screw set 4 pcs)	1
12. Mast guard	1
13. Mast guard	1
14. Mast guard	1
15. Counter part of limit switch (top and bottom position)	2
16. Signalling bar	2
17. Fastening piece (for items 15/16)	5
18. Platform section (1,68 x1,6 m)	6
19. Platform screw set	36
20. Railing (1,0 m)	1
21. Railing (1,6 m)	12
22. Railing with gate (1,6 m)	2
23. Railing coupler 2 (corner piece) with fastening screws	8
24. Railing coupler 1 (straight) with fastening screws	10
25.R. Railing coupler 3 (sidemounting) with fastening screws	2
25.L. Railing coupler 4 (sidemounting) with fastening screws	2
26. Hex-socket cap-screw	30
27. Ladder	2
28. Side platform support	2
29. Side platform screw set	4
30. Anchor set	x)
31. Top anchor pipes	2
32. Special tool (for platforms assembly)	1
33. Special tool (for jacks)	1
34. Special key (for guiding rollers)	1
35. Special key (for safety brake)	1
36. Pendant control for drive of the chassis and horizontal and vertical drive of the platform	1
37. Pendant control for safety brake test (single/twin unit)	1

x) Depending on the mast height



Drawing 1.8.

13-0994-1

SC1300 single on wheel chassis with 10,5 m platform - basic delivery scope.

TABLE OF PART QUANTITIES, WHICH DEPEND ON HOISTING HEIGHT

Parts and units, quantity of which depends on the mast height are specified in the following table.

Double the quantities for twin.

No. Part	Drawing or spare Part No	Hoisting height/m									
		20	30	40	50	60	70	80	90	100	
		Quantity/pcs									
1. Mast section	PG100323	16 (32)	24 (48)	32 (64)	40 (80)	48 (96)	56 (112)	64 (128)	72 (144)	80x) (160)	
1.1. Mast bolt set	10005932	64	96	128	160	192	224	256	288	320	
2. Wall anchors	PG109128	1 (2)	2 (4)	3 (6)	4 (8)	5 (10)	6 (12)	6 (12)	7 (14)	8 (16)	
	Min. quantity of anchors for mast on wheel chassis										
	Min. quantity of anchors for mast on minichassis	3 (6)	4 (8)	5 (10)	6 (12)	7 (14)	8 (16)	8 (16)	9 (18)	10 (20)	
3. Cables in metres	m	28 (56)	38 (76)	48 (96)	58 (116)	68 (136)	78 (156)	88 (176)	98 (196)	108 (216)	
5 x 6 mm ²											
x) Basic unit includes one assembled mast section.											

1.3. WARRANTY TERMS



The seller warrants new **SCANCLIMBER** mast climbing work platform is supplied free from defects in material and workmanship.

The warranty is valid for six (6) months from the date of delivery.

The warranty of the equipment and parts manufactured by subcontractors is limited to the warranty of their respective manufactures.

The warranty does not cover:

1. damage or loss caused by transportation
2. damage or loss caused by misconduct, misapplication or accident
3. damage or loss caused by negligence of instructions, service, maintenance or storage
4. normal deterioration of the equipment and damage resulting from wearing parts: material like rubber tyres, electrical equipment etc.
5. damage or loss caused by maintenance or repairs performed by a nonauthorized service personnel
6. damage or loss caused by purchaser's acts or omissions causing alterations to the quality or structure of mast climber
7. any such indirect damage or loss as loss of profit and downtime cost etc.

No claim will be accepted if non-original parts, not approved of by the seller, have been used.

Warranty claims should be done in writing describing the damage as completely as possible and sent to the address below within fourteen (14) days from the date of disclosure of the damage.

address:

SCANCLIMBER OY

- Turkkirata 26 • FI-33960 PIRKKALA, FINLAND •
- TEL. +358 106 807 000 • FAX. +358 106 807 033 •

The warranty liability is limited, at the sellers discretion to

- (1) replacing the damaged part or
- (2) repairing the damaged part by the seller or by a subcontractor or
- (3) granting a price reduction

The warranty of replaced or repaired part expires at the expiration time of the warranty of the mast climber.

The purchaser is obliged to send the damaged part to the seller for inspection by a request. Replaced or refunded parts become the property of the seller.